

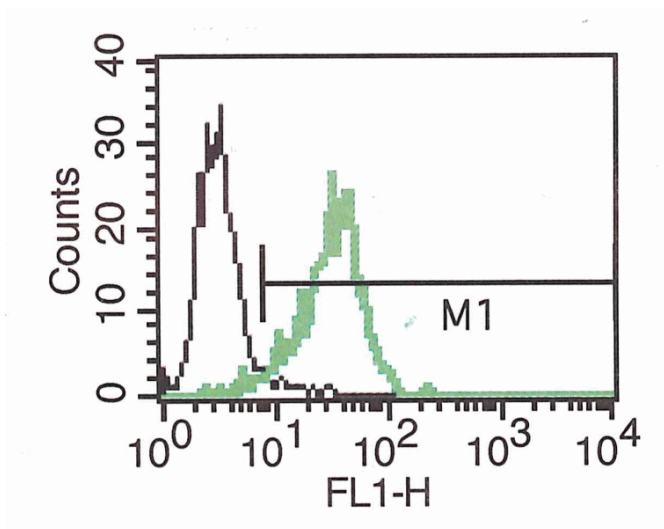
## L1CAM

### Mouse Anti-Human L1CAM (Clone B-L51) mAb, Azide Free

<b>Catalog No.</b>	CDM499A CDM499B	<b>Quantity:</b>	200 µg 500 µg
<b>Alternate Names:</b>	CD171, Neural cell adhesion molecule L1, NCAM-L1		
<b>Description:</b>	Neural cell adhesion molecule involved in the dynamics of cell adhesion and in the generation of transmembrane signals at tyrosine kinase receptors. During brain development, critical in multiple processes, including neuronal migration, axonal growth and fasciculation, and synaptogenesis. In the mature brain, plays a role in the dynamics of neuronal structure and function, including synaptic plasticity.		
<b>UniProt ID:</b>	P32004		
<b>Gene ID:</b>	3897		
<b>Concentration:</b>	1.0 mg/ml		
<b>Specificity:</b>	Recognizes native and recombinant human L1CAM		
<b>Hybridoma:</b>	Myeloma X63/AG.8653 x Balb/c node cells		
<b>Isotype:</b>	Mouse IgG1 <sub>κ</sub>		
<b>Immunogen:</b>	Recombinant human L1CAM/Fc		
<b>Clone:</b>	B-L1		
<b>Formulation:</b>	Sterile filtered PBS, carrier and preservative free.		
<b>Applications:</b>	Flow Cytometry, Western Blot		
<b>Storage &amp; Stability:</b>	Store at 2-8°C for up to 1 year or in working aliquots at -20°C to -80°C. <b>Avoid repeated freeze-thaw cycles.</b>		



A typical staining pattern with B-L51 monoclonal antibody of HeLa cell line



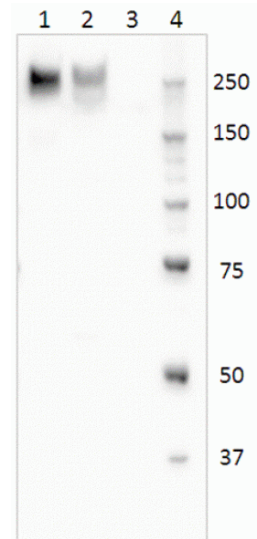
Western Blot with B-L51  
1: rh L1CAM

2: cell lysate of HeLa (positive cell line)

3: cell lysate of JM (negative cell line)

4: molecular weight marker

Reduced form



NOT FOR HUMAN USE. FOR RESEARCH ONLY. NOT FOR DIAGNOSTIC OR THERAPEUTIC USE.



**Cell Sciences**<sup>®</sup>  
65 Parker Street  
Unit 11  
Newburyport, MA 01950

Toll Free: 888-769-1246  
Phone: 978-572-1070  
Fax: 978-992-0298

E-mail: [info@cellsciences.com](mailto:info@cellsciences.com)  
Website: [www.cellsciences.com](http://www.cellsciences.com)