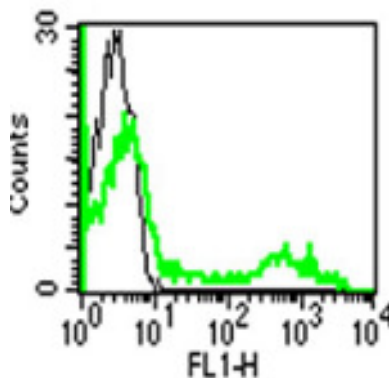


HLA-DRA/HLA-DRB

Mouse Anti-Human HLA-DR (Clone B-C10) FITC mAb

Catalog No.	CDM471	Quantity:	100 tests
Alternate Names:	Human Leukocyte Antigen DR, Major Histocompatibility Complex Class II DR, MHC-II DR		
Description:	The mouse monoclonal antibody recognizes human MHC Class II, the HLA-DR allele. The MHC Class II, HLA-DR, molecule is a heterodimer consisting of one HLA-DR alpha and one of 5 HLA-DR beta chains, both anchored in the membrane. MHC Class II plays a central role in the immune system by presenting peptides derived from extracellular proteins. Class II molecules are expressed in antigen presenting cells (APC: B lymphocytes, dendritic cells, macrophages).		
Concentration:	100 tests/ml		
Gene ID:	3122/ 3123/ 3124/ 3125/ 3126/ 3127		
Conjugate:	FITC		
Specificity:	Recognizes the MHC Class II (HLA-DR) membrane-bound antigen.		
Host:	Mouse		
Isotype:	IgG2bk		
Immunogen:	RPMI 8866 and DAUDI cell lines		
Clone:	B-C10		
Formulation:	Liquid in PBS + 5% BSA + 0.09% sodium azide. Precaution: Sodium azide is a poisonous and hazardous substance which should be handled by trained staff only.		
Applications:	Flow Cytometry		
Application Notes:	Use 10 µl to label 10 ⁶ cells or 100 µl of whole blood. The optimal concentration should be determined by the user for each specific application.		
Storage & Stability:	Stable at 2-8°C for 12 months. For longer storage, freeze aliquots at -20 to -80°C. Avoid repeated freeze-thaw cycles.		

A typical staining pattern of lymphocytes with the B-C10 monoclonal antibody.



NOT FOR HUMAN USE. FOR RESEARCH ONLY. NOT FOR DIAGNOSTIC OR THERAPEUTIC USE.

