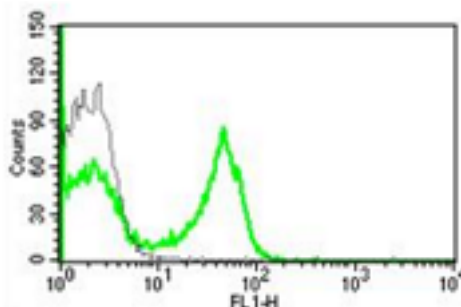


## CCR6

### Mouse Anti-Human CCR6/CD196 (Clone B-R35) mAb

<b>Catalog No.</b>	CDM470	<b>Quantity:</b>	200 tests
<b>Alternate Names:</b>	BN-1, C-C CKR-6, CC-CKR-6, CKR-L3, CKRL3, CMKBR6, DCR2, DRY6, GPR29, GPRCY4, STRL22		
<b>Description:</b>	The mouse monoclonal antibody recognizes human CCR6/CD196, a member of the beta chemokine receptor family, which is predicted to be a seven transmembrane protein similar to G protein-coupled receptors. CCR6 is preferentially expressed by immature dendritic cells and memory T cells. The ligand of this receptor is macrophage inflammatory protein 3 alpha (MIP-3 alpha). This receptor has been shown to be important for B-lineage maturation and antigen-driven B-cell differentiation, and it may regulate the migration and recruitment of dendritic and T cells during inflammatory and immunological responses.		
<b>Gene ID:</b>	1235		
<b>Concentration:</b>	100 tests/ml		
<b>Conjugate:</b>	Unconjugated		
<b>Specificity:</b>	Human CD196/CCR6		
<b>Host:</b>	Mouse		
<b>Isotype:</b>	IgG2ak		
<b>Immunogen:</b>	Human CCR6-transfected NIH-3T3 cells		
<b>Clone:</b>	B-R35		
<b>Formulation:</b>	Liquid in PBS+ 1% BSA + 0.09% sodium azide. Precaution: Sodium azide is a poisonous and hazardous substance which should be handled by trained staff only.		
<b>Applications:</b>	Flow Cytometry		
<b>Application Notes:</b>	The optimal concentration should be determined by the user for each specific application.		
<b>Storage &amp; Stability:</b>	Stable at 2-8°C for 1 year. For long-term storage, freeze in aliquots at -20 to -80°C. <b>Avoid repeated freeze-thaw cycles.</b>		

A typical staining pattern of lymphocytes with the B-R35 monoclonal antibody.



**NOT FOR HUMAN USE. FOR RESEARCH ONLY. NOT FOR DIAGNOSTIC OR THERAPEUTIC USE.**

