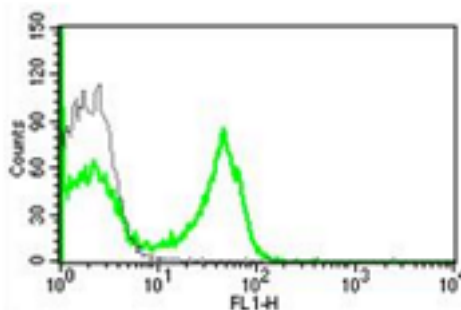


CCR6

Mouse Anti-Human CCR6/CD196 (Clone B-R35) FITC mAb

Catalog No.	CDM469	Quantity:	100 tests
Alternate Names:	BN-1, C-C CKR-6, CC-CKR-6, CKR-L3, CKRL3, CMKBR6, DCR2, DRY6, GPR29, GPRCY4, STRL22		
Description:	The mouse monoclonal antibody recognizes human CCR6/CD196, a member of the beta chemokine receptor family, which is predicted to be a seven transmembrane protein similar to G protein-coupled receptors. CCR6 is preferentially expressed by immature dendritic cells and memory T cells. The ligand of this receptor is macrophage inflammatory protein 3 alpha (MIP-3 alpha). This receptor has been shown to be important for B-lineage maturation and antigen-driven B-cell differentiation, and it may regulate the migration and recruitment of dendritic and T cells during inflammatory and immunological responses.		
Gene ID:	1235		
Concentration:	100 tests/ml		
Conjugate:	FITC		
Specificity:	Human CD196/CCR6		
Host:	Mouse		
Isotype:	IgG2ak		
Immunogen:	Human CCR6-transfected NIH-3T3 cells		
Clone:	B-R35		
Formulation:	Liquid in PBS + 5% BSA + 0.09% sodium azide. Precaution: Sodium azide is a poisonous and hazardous substance which should be handled by trained staff only.		
Applications:	Flow Cytometry		
Application Notes:	Use 10 µl to label 10 ⁶ cells or 100 µl of whole blood. The optimal concentration should be determined by the user for each specific application.		
Storage & Stability:	Stable at 2-8°C for 1 year. For long-term storage, freeze in aliquots at -20 to -80°C. Avoid repeated freeze-thaw cycles.		

A typical staining pattern of lymphocytes with the B-R35 monoclonal antibody.



NOT FOR HUMAN USE. FOR RESEARCH ONLY. NOT FOR DIAGNOSTIC OR THERAPEUTIC USE.

