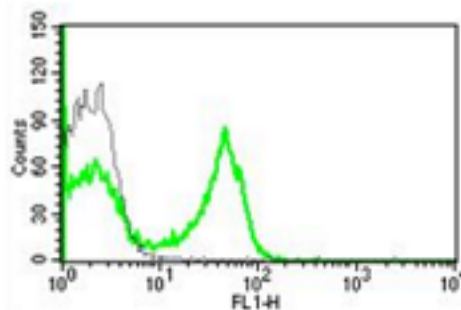


## CCR6

### Mouse Anti-Human CCR6 / CD196 (Clone B-R35) mAb, Azide Free

<b>Catalog No.</b>	CDM468A CDM468B	<b>Quantity:</b>	200 µg 500 µg
<b>Alternate Names:</b>	C-C chemokine receptor type 6, Chemokine receptor-like 3, G-protein coupled receptor 29, GPR-CY4, LARC receptor		
<b>Description:</b>	CCR6/CD196 is a member of the beta chemokine receptor family, which is predicted to be a seven transmembrane protein similar to G protein-coupled receptors. CCR6 is preferentially expressed by immature dendritic cells and memory T cells. The ligand of this receptor is macrophage inflammatory protein 3 alpha (MIP-3 alpha). This receptor has been shown to be important for B-lineage maturation and antigen-driven B-cell differentiation, and it may regulate the migration and recruitment of dendritic and T cells during inflammatory and immunological responses.		
<b>UniProt ID:</b>	P51684		
<b>Gene ID:</b>	1235		
<b>Concentration:</b>	1 mg/ml		
<b>Specificity:</b>	Human CD196/CCR6		
<b>Hybridoma:</b>	SP2/O x Balb/c B cells		
<b>Isotype:</b>	Mouse IgG2ak		
<b>Immunogen:</b>	Human CCR6-transfected NIH-3T3 cells		
<b>Clone:</b>	B-R35		
<b>Formulation:</b>	Sterile-filtered PBS, carrier and preservative-free.		
<b>Applications:</b>	Flow Cytometry		
<b>Storage &amp; Stability:</b>	Stable at 2-8°C for 1 year. For long-term storage, freeze in aliquots at -20 to -80°C. <b>Avoid repeated freeze-thaw cycles.</b>		

A typical staining pattern of lymphocytes with the B-R35 monoclonal antibody.



NOT FOR HUMAN USE. FOR RESEARCH ONLY. NOT FOR DIAGNOSTIC OR THERAPEUTIC USE.



**Cell Sciences®**  
65 Parker Street  
Unit 11  
Newburyport, MA 01950

Toll Free: 888-769-1246  
Phone: 978-572-1070  
Fax: 978-992-0298

E-mail: [info@cellsciences.com](mailto:info@cellsciences.com)  
Website: [www.cellsciences.com](http://www.cellsciences.com)