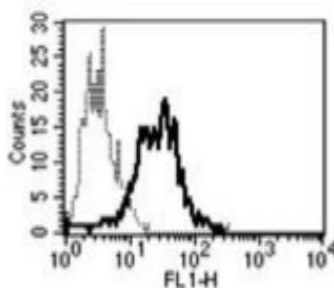


## IL1RL1

### Mouse Anti-Human IL-1RL1/ST2 (Clone B-L42) mAb

<b>Catalog No.</b>	CDM467	<b>Quantity:</b>	200 tests
<b>Alternate Names:</b>	Interleukin 1 receptor like 1, DER4, FIT-1, IL33R, ST2L, ST2V, T1		
<b>Description:</b>	The mouse monoclonal antibody recognizes human interleukin 1 receptor (IL-1R)-like 1 (IL-1RL1), a member of the IL-1R family. Studies suggest that this receptor can be induced by proinflammatory stimuli, and may be involved in the function of helper T cells. IL-1RL1, IL-1R type I (IL-1R1), IL-1R type II (IL1R2) and IL-1R-like 2 (IL1RL2) form a cytokine receptor gene cluster on chromosome 2q12.		
<b>Gene ID:</b>	9173		
<b>Concentration:</b>	100 tests/ml		
<b>Conjugate:</b>	Unconjugated		
<b>Specificity:</b>	Recognizes recombinant and native human ST2/IL-1RL1.		
<b>Host:</b>	Mouse		
<b>Isotype:</b>	IgG2bk		
<b>Immunogen:</b>	Recombinant human ST2		
<b>Clone:</b>	B-L42		
<b>Formulation:</b>	Liquid in PBS + 1% BSA + 0.09% sodium azide. Precaution: Sodium azide is a poisonous and hazardous substance which should be handled by trained staff only.		
<b>Applications:</b>	Flow Cytometry		
<b>Application Notes:</b>	Use 10 $\mu$ l to label $10^6$ cells or 100 $\mu$ l of whole blood. The optimal concentration should be determined by the user for each specific application.		
<b>Storage &amp; Stability:</b>	Stable at 2-8°C for 1 year. For long-term storage, freeze in aliquots at -20 to -80°C. <b>Avoid repeated freeze-thaw cycles.</b>		

A typical staining pattern with the B-L42 monoclonal antibody of LPS activated monocytes.



NOT FOR HUMAN USE. FOR RESEARCH ONLY. NOT FOR DIAGNOSTIC OR THERAPEUTIC USE.

