

IL1RL1

Mouse Anti-Human ST2 (Clone B-L42) mAb, Azide Free

Catalog No.	CDM466A	Quantity:	200 µg
	CDM466B		500 µg

Alternate Names: Interleukin-1 receptor-like 1

Description: ST2 belongs to the interleukin-1 receptor family and contains three Ig-like C2-type (immunoglobulin-like) domains and one TIR domain. ST2 is the receptor for interleukin -33 (IL-33) and its stimulation recruits MYD88, IRAK1, IRAK4, and TRAF6. IL-33/ST2 has emerged as an intercellular signaling system that has been associated with ulcerative colitis, and participates in the antigen/allergen response, autoimmunity, organ fibrosis and cardiac injury.

UniProt ID: Q01638

Gene ID: 9173

Concentration: 1.0 mg/ml

Specificity: Recognizes both native membrane form and recombinant human ST2.

Hybridoma: Myeloma X63/AG.8653 x Balb/c node cells

Isotype: Mouse IgG2bk

Immunogen: Recombinant human ST2

Clone: B-L42

Formulation: Sterile-filtered PBS, carrier and preservative-free.

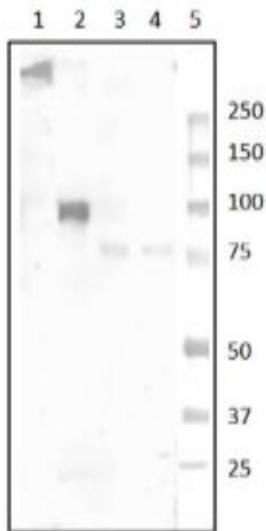
Applications: Flow Cytometry, Western Blot

Storage & Stability: Store at 2-8°C for up to 1 year or in working aliquots at -20°C to -80°C.
Avoid repeated freeze-thaw cycles.

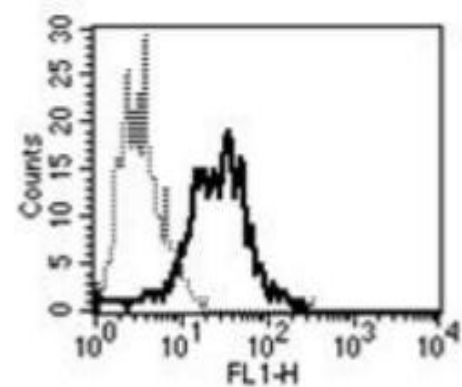
Western Blot with B-L42. Predicted MW: 62kDa.

Observed MW (lanes 3 and 4): 75-80kDa.

- 1 - rh ST2 (non-reduced);
- 2 - rh ST2 (reduced);
- 3 - HT29 cell lysate (non-reduced);
- 4 - HT29 cell lysate (reduced);
- 5 - marker.



A typical staining pattern with the B-L42 monoclonal antibody of LPS activated monocytes.



NOT FOR HUMAN USE. FOR RESEARCH ONLY. NOT FOR DIAGNOSTIC OR THERAPEUTIC USE.

