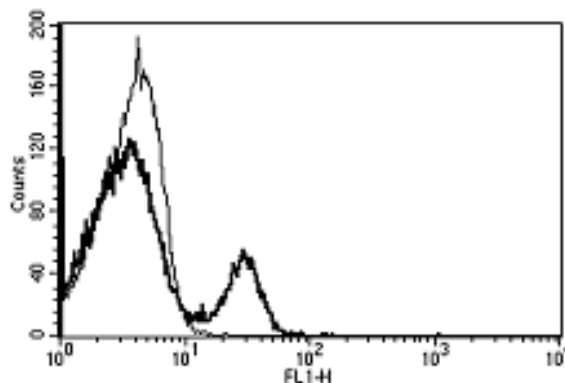


## CD40

### Mouse Anti-Human CD40 (Clone B-B20) FITC mAb

<b>Catalog No.</b>	CDM370	<b>Quantity:</b>	100 tests
<b>Alternate Names:</b>	Tumor necrosis factor receptor superfamily member 5, B-cell surface antigen CD40, Bp50, CD40L receptor, CDw40, CD40		
<b>Description:</b>	The mouse monoclonal antibody recognizes human CD40, a member of the TNF-receptor superfamily. CD40 is a receptor on antigen-presenting cells of the immune system and is essential for mediating a broad variety of immune and inflammatory responses including T cell-dependent immunoglobulin class switching, memory B cell development, and germinal center formation.		
<b>UniProt ID:</b>	P25942		
<b>Conjugate:</b>	FITC		
<b>Specificity:</b>	Recognizes the Bp50 antigen, a 48 kDa protein.		
<b>Hybridoma:</b>	Myeloma X63/AG.8653 x Balb/c spleen cells		
<b>Isotype:</b>	Mouse IgG1 kappa		
<b>Immunogen:</b>	Raji cell line		
<b>Clone:</b>	B-B20		
<b>Concentration:</b>	100 tests / 1 ml		
<b>Formulation:</b>	PBS containing 5% BSA and 0.1% sodium azide.		
<b>Applications:</b>	Flow Cytometry, Immunohistochemistry, Immunoprecipitation		
<b>Application Notes:</b>	Use 10 µl to label 10 <sup>6</sup> cells or 100 µl of whole blood. The optimal concentration should be determined by the user for each specific application.		
<b>Storage &amp; Stability:</b>	Stable for 1 year at 2-8°C. For longer storage, aliquot and store at -20 to -80°C. <b>Avoid repeated freeze-thaw cycles.</b>		

A typical staining pattern with the B-B20 mAb of lymphocytes



NOT FOR HUMAN USE. FOR RESEARCH ONLY. NOT FOR DIAGNOSTIC OR THERAPEUTIC USE.



**Cell Sciences®**  
65 Parker Street  
Unit 11  
Newburyport, MA 01950

Toll Free: 888-769-1246  
Phone: 978-572-1070  
Fax: 978-992-0298

E-mail: [info@cellsciences.com](mailto:info@cellsciences.com)  
Website: [www.cellsciences.com](http://www.cellsciences.com)