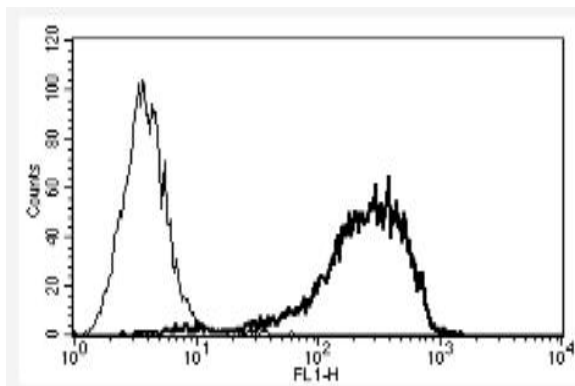


SDC1

Mouse Anti-Human Syndecan-1 / CD138 Clone B-A38 FITC mAb

Catalog No.	CDM366	Quantity:	100 tests
Alternate Names:	CD138, SYND1, syndecan, CD138 antigen		
Description:	Syndecan-1 is a type-I transmembrane proteoglycan, containing three extracellular attachment sites for heparan sulfate and two for chondroitin sulfate, to interact with extracellular matrix molecules and growth factors to maintain epithelial cell morphology, anchorage-dependent growth, and inhibition of invasiveness in cell culture assays.		
UniProt ID:	P18827		
Gene ID:	6382		
Specificity:	Recognizes the syndecan-1, the heparan sulfate proteoglycan, a 65-70 kDa protein		
Hybridoma:	Myeloma X63/AG.8653 x BALB/c spleen cells		
Immunogen:	U266 cell line		
Isotype:	Mouse IgG1		
Clone:	B-A38		
Formulation:	Phosphate-buffered saline with 5% BSA and 0.1 % sodium azide Precaution: Sodium azide is a poisonous and hazardous substance which should be handled by trained staff only.		
Purification:	Ion exchange chromatography		
Reconstitution:	Use 10 µl to label 10 ⁶ cells or 100 µl of whole blood.		
Applications:	Suitable for flow cytometry.		
Storage & Stability:	Stable at 2-8°C for 12 months. For longer storage, freeze aliquots.		

A typical staining pattern with the B-A38 monoclonal antibody of U266 cell line



NOT FOR HUMAN USE. FOR RESEARCH ONLY. NOT FOR DIAGNOSTIC OR THERAPEUTIC USE.



Cell Sciences®
65 Parker Street
Unit 11
Newburyport, MA 01950

Toll Free: 888-769-1246
Phone: 978-572-1070
Fax: 978-992-0298

E-mail: info@cellsciences.com
Website: www.cellsciences.com