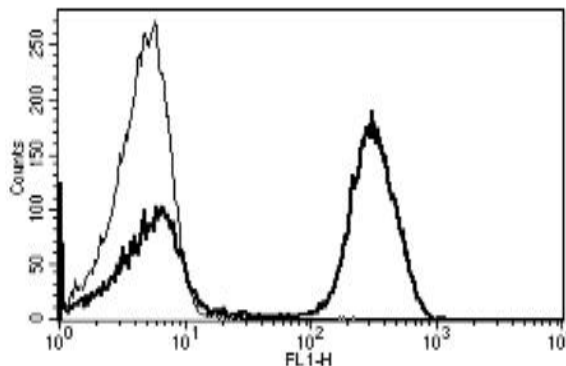


CD3

Mouse Anti-Human CD3 (Clone B-B11) FITC mAb

Catalog No.	CDM359	Quantity:	100 tests
Description:	The monoclonal antibody recognizes human CD3, a complex of CD3-gamma, -epsilon, -delta and -zeta, which together with the T-cell receptor alpha/beta and gamma/delta heterodimers, forms the T-cell receptor-CD3 complex. This complex plays an important role in coupling antigen recognition to several intracellular signal-transduction pathways.		
Concentration:	100 tests/ ml		
Conjugate:	FITC		
Specificity:	Recognizes human CD3, a 20-32 kDa protein		
Host:	Mouse		
Isotype:	IgG1		
Immunogen:	PHA activated T cells		
Clone:	B-B11		
Formulation:	Liquid in PBS + 5% BSA + 0.09% sodium azide. Precaution: Sodium azide is a poisonous and hazardous substance which should be handled by trained staff only.		
Purification:	Ion exchange chromatography		
Applications:	Flow Cytometry		
Application Notes:	Use 10 µl to label 10 ⁶ cells or 100 µl of whole blood. The optimal concentration should be determined by the user for each specific application.		
Storage & Stability:	Store at 2-8°C for 12 months. For longer storage, aliquot and freeze at -20 to -80°C. Avoid repeated freeze-thaw cycles.		

A typical staining pattern with the Anti-Human CD3 Clone B-B11 monoclonal antibody of lymphocytes



NOT FOR HUMAN USE. FOR RESEARCH ONLY. NOT FOR DIAGNOSTIC OR THERAPEUTIC USE.



Cell Sciences®
65 Parker Street
Unit 11
Newburyport, MA 01950

Toll Free: 888-769-1246
Phone: 978-572-1070
Fax: 978-992-0298

E-mail: info@cellsciences.com
Website: www.cellsciences.com