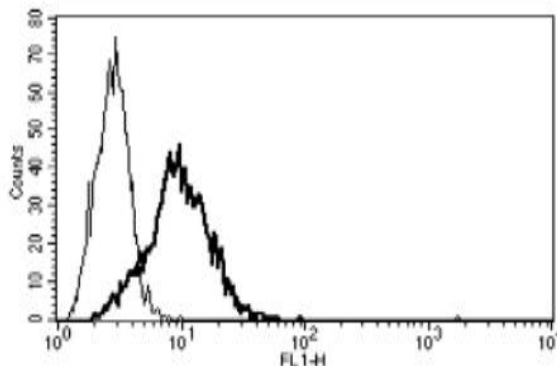


NTSR1

Mouse Anti-Human Neurotensin Receptor Type 1 (Clone B-N6) mAb

Catalog No.	CDM342	Quantity:	200 tests
Alternate Names:	NT-R-1, NTR1, NTRH, High-affinity levocabastine-insensitive neurotensin receptor		
Description:	Neurotensin receptor type 1 belongs to the large superfamily of G-protein coupled receptors. NTSR1 mediates the multiple functions of neurotensin, such as hypotension, hyperglycemia, hypothermia, antinociception, and regulation of intestinal motility and secretion.		
UniProt ID:	P30989		
Gene ID:	4923		
Hybridoma:	Myeloma X63/AG.8653 x Balb/c spleen cells		
Specificity:	Recognizes the membrane protein		
Host:	Mouse		
Immunogen:	NTSR1 transfected CHO cell line		
Isotype:	IgM κ		
Clone:	B-N6		
Concentration:	200 tests / 2 mL		
Formulation:	PBS containing 1% BSA and 0.09% sodium azide.		
Applications:	Flow Cytometry		
Application Notes:	Use 10 μ L to label 10 ⁶ cells or 100 μ L of whole blood. The optimal concentration should be determined by the user for each specific application.		
Storage & Stability:	Store at 2-8°C for up to one year. DO NOT FREEZE. DO NOT CONCENTRATE (risk of precipitation)		
Statement:	PPE is recommended when working with products containing sodium azide.		

A typical staining pattern with the B-N6 monoclonal antibody on NTSR1 transfected CHO cell line.



NOT FOR HUMAN USE. FOR RESEARCH ONLY. NOT FOR DIAGNOSTIC OR THERAPEUTIC USE.