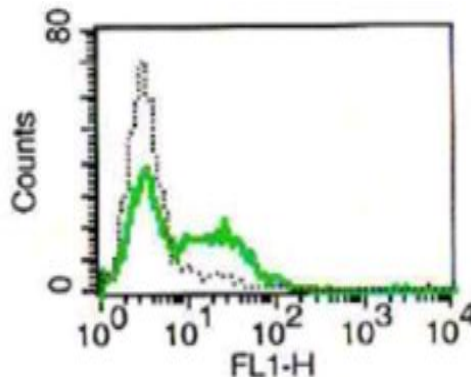


KLRB1

Mouse Anti-Human CD161 / KLRB1 (Clone B-D51) mAb, Azide Free

Catalog No.	CDM333A CDM333B	Quantity:	200 µg 500 µg
Alternate Names:	Killer cell lectin-like receptor subfamily B member 1, C-type lectin domain family 5 member B, Natural killer cell surface protein P1A, HNKR-P1a		
Description:	Natural killer (NK) cells are lymphocytes that mediate cytotoxicity and secrete cytokines after immune stimulation. Several genes of the C-type lectin superfamily, including the rodent NKRP1 family of glycoproteins, are expressed by NK cells and may be involved in the regulation of NK cell function. The KLRB1 protein contains an extracellular domain with several motifs characteristic of C-type lectins, a transmembrane domain, and a cytoplasmic domain. The KLRB1 protein is classified as a type II membrane protein because it has an external C terminus.		
UniProt ID:	Q12918		
Concentration:	1 mg/ml		
Specificity:	Recognizes human CD161/KLRB1.		
Isotype:	Mouse IgG1k		
Immunogen:	Recombinant human KLRB1.		
Clone:	B-D51		
Formulation:	Sterile-filtered PBS, carrier and preservative free.		
Applications:	Flow Cytometry		
Storage & Stability:	Stable at 2-8°C for 1 year. For longer storage, prepare aliquots and store at -20 to -80° C. Avoid repeated freeze-thaw cycles.		

A typical staining pattern of lymphocytes with the B-D51 monoclonal antibody.



NOT FOR HUMAN USE. FOR RESEARCH ONLY. NOT FOR DIAGNOSTIC OR THERAPEUTIC USE.

