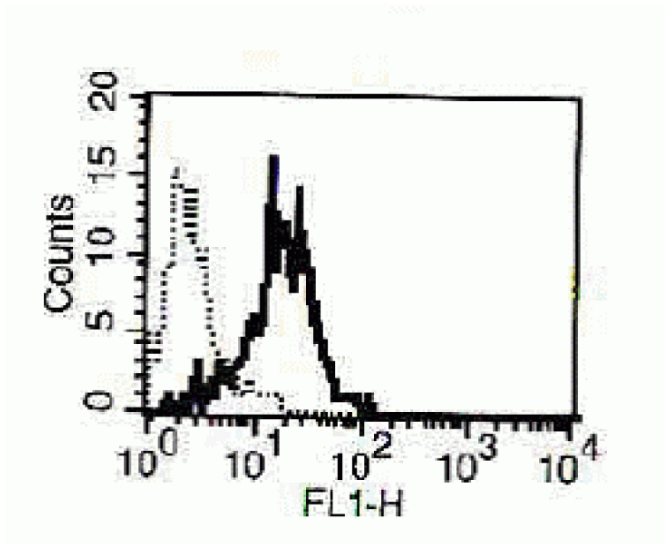
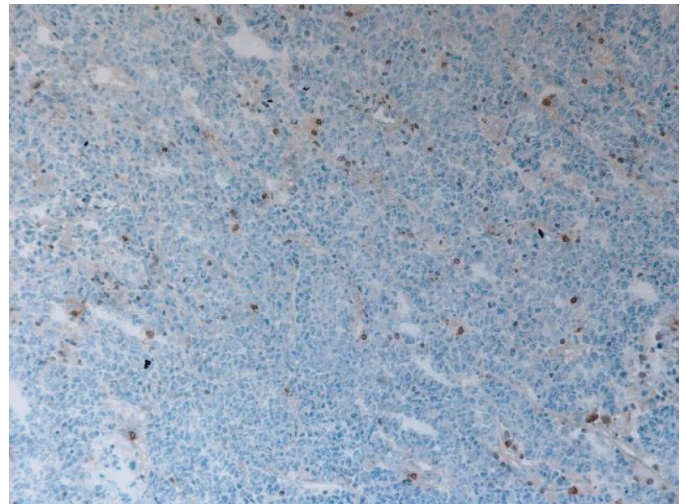


A typical staining pattern of NK-L cell line with the B-D49 monoclonal antibody.



Frozen section (acetone fixed) of human colon adenocarcinoma with B-D49 at 1:200 (background coloration by Hematoxylin)



NOT FOR HUMAN USE. FOR RESEARCH ONLY. NOT FOR DIAGNOSTIC OR THERAPEUTIC USE.



Cell Sciences®
65 Parker Street
Unit 11
Newburyport, MA 01950

Toll Free: 888-769-1246
Phone: 978-572-1070
Fax: 978-992-0298

E-mail: info@cellsciences.com
Website: www.cellsciences.com