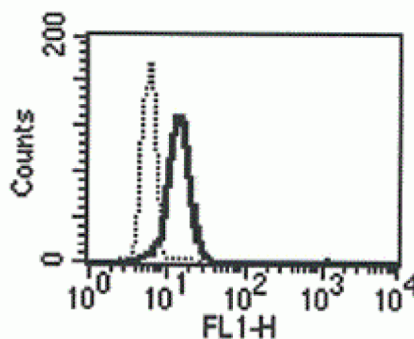


## LGALS3

### Mouse Anti-Human Galectin-3 (Clone B-S43) mAb, Azide Free

<b>Catalog No.</b>	CDM319A CDM319B	<b>Quantity:</b>	200 µg 500 µg
<b>Alternate Names:</b>	Gal-3, Carbohydrate-binding protein 35, CBP 35, Galactose-binding protein, GALBP, 35 kDa lectin, Lectin L-29, Mac-2 antigen		
<b>Description:</b>	Galectin-3 is a member of the galectin family of carbohydrate binding proteins, which have an affinity for beta-galactosides. The protein is characterized by an N-terminal proline-rich tandem repeat domain and a single C-terminal carbohydrate recognition domain. The protein can self-associate through the N-terminal domain allowing it to bind to multivalent saccharide ligands. It localizes to the extracellular matrix, the cytoplasm, and the nucleus and plays a role in numerous cellular functions including apoptosis, innate immunity, cell adhesion, T-cell regulation.		
<b>UniProt ID:</b>	P17931		
<b>Gene ID:</b>	3958		
<b>Concentration:</b>	1.0 mg/ml		
<b>Specificity:</b>	Recognizes both native and recombinant protein.		
<b>Hybridoma:</b>	Myeloma X63/AG.8653 x BALB/c lymph node cells		
<b>Immunogen:</b>	Recombinant human Galectin-3		
<b>Isotype:</b>	Mouse IgG2ak		
<b>Clone:</b>	B-S43		
<b>Formulation:</b>	Sterile filtered PBS, carrier and preservative free.		
<b>Purification:</b>	Ion exchange chromatography		
<b>Applications:</b>	ELISA, Flow Cytometry		
<b>Storage &amp; Stability:</b>	Stable at 2-8°C for 1 year. For longer storage, freeze in aliquots at -20°C to -80°C. <b>Avoid repeated freeze-thaw cycles.</b>		

A typical intracytoplasmic staining pattern with the B-S43 monoclonal antibody of monocytes



NOT FOR HUMAN USE. FOR RESEARCH ONLY. NOT FOR DIAGNOSTIC OR THERAPEUTIC USE.

# cellsciences.com



**Cell Sciences®**  
65 Parker Street  
Unit 11  
Newburyport, MA 01950

Toll Free: 888-769-1246  
Phone: 978-572-1070  
Fax: 978-992-0298

E-mail: [info@cellsciences.com](mailto:info@cellsciences.com)  
Website: [www.cellsciences.com](http://www.cellsciences.com)