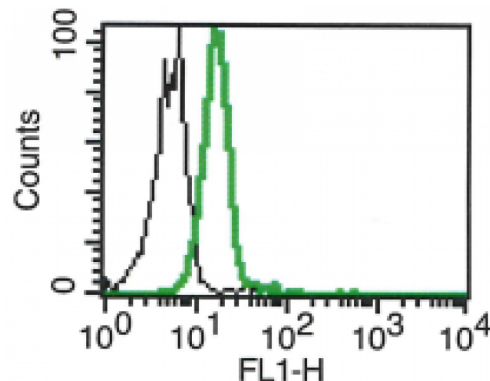


## MICB

### Mouse Anti-Human MICB (Clone B-D54) mAb, Azide Free

<b>Catalog No.</b>	CDM309A CDM309B	<b>Quantity:</b>	200 µg 500 µg
<b>Alternate Names:</b>	MHC class I polypeptide-related sequence B, MIC-B		
<b>Description:</b>	The mouse monoclonal antibody recognizes human MICB, a heavily glycosylated protein that is a ligand for the NKG2D type II receptor. Binding of the ligand activates the cytolytic response of natural killer (NK) cells, CD8 alphabeta T cells, and gammadelta T cells that express the receptor. This protein is stress-induced and is similar to MHC class I molecules. However, it does not associate with beta-2-microglobulin or bind peptides.		
<b>UniProt ID:</b>	Q29980		
<b>Gene ID:</b>	4277		
<b>Concentration:</b>	1.0 mg/ml		
<b>Specificity:</b>	Recognizes both native and recombinant MICB. Recognizes soluble and membrane-bound antigen.		
<b>Hybridoma:</b>	Myeloma X63/AG.8653 x Balb/c node cells		
<b>Immunogen:</b>	Mouse IgG1κ		
<b>Isotype:</b>	Recombinant human MICB		
<b>Clone:</b>	B-D54		
<b>Formulation:</b>	Sterile-filtered PBS, carrier and preservative free.		
<b>Applications:</b>	ELISA, Flow cytometry		
<b>Storage &amp; Stability:</b>	Store at 2-8°C for up to 1 year or in working aliquots at -20°C to -80°C. <b>Avoid repeated freeze-thaw cycles.</b>		

A typical staining pattern with the B-D54 monoclonal antibody of JM cell line



NOT FOR HUMAN USE. FOR RESEARCH ONLY. NOT FOR DIAGNOSTIC OR THERAPEUTIC USE.



**Cell Sciences®**  
65 Parker Street  
Unit 11  
Newburyport, MA 01950

Toll Free: 888-769-1246  
Phone: 978-572-1070  
Fax: 978-992-0298

E-mail: [info@cellsciences.com](mailto:info@cellsciences.com)  
Website: [www.cellsciences.com](http://www.cellsciences.com)