

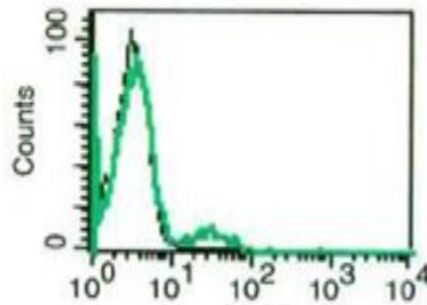
## NCR1

### Mouse Anti-Human NKp46 (Clone B-N40) FITC mAb

<b>Catalog No.</b>	CDM298	<b>Quantity:</b>	100 tests
<b>Alternate Names:</b>	Natural cytotoxicity triggering receptor 1, NCR1, NK cell-activating receptor, CD335, Lymphocyte antigen 94 homolog		
<b>Description:</b>	Natural cytotoxicity receptors (NCRs), are unique markers that regulate natural killer (NK) cell cytotoxicity and cytokine production. The NCR family are comprised of three type I transmembrane (TM) receptors, termed NKp46, NKp44, and NKp30, which are encoded by the genes, NCR1, NCR2, and NCR3, respectively. Even though the NCRs were discovered based on their ability to induce NK cell cytotoxicity of monoclonal antibody (mAb)-coated tumor cell targets, the blocking of individual NCR activity using soluble mAbs had only a mild effect on NK cell cytotoxicity and different tumor cells varied in their susceptibility. Combinations of soluble mAbs to the NCRs were found to have a much stronger blocking effect for selected tumor cell-lines indicating that the NCRs can cooperate with each other to mediate NK cell cytotoxicity of certain tumor cell-types.		
<b>UniProt ID:</b>	O76036		
<b>Gene ID:</b>	9437		
<b>Conjugate:</b>	FITC		
<b>Specificity:</b>	Recognizes human NKp46, a 26.6 kDa protein		
<b>Host:</b>	Mouse		
<b>Isotype:</b>	IgG1 $\kappa$		
<b>Immunogen:</b>	Recombinant human NKp46		
<b>Clone:</b>	B-N40		
<b>Hybridoma:</b>	Myeloma X63/AG.8653 x Balb/c node cells		
<b>Formulation:</b>	PBS containing 5 % BSA and 0.1 % sodium azide. <b>Precaution:</b> Sodium azide is a poisonous and hazardous substance which should be handled by trained staff only.		
<b>Purification:</b>	Ion exchange chromatography		
<b>Concentration:</b>	100 tests/ ml		
<b>Applications:</b>	Flow Cytometry		
<b>Application Notes:</b>	Use 10 $\mu$ l to label 10 <sup>6</sup> cells or 100 $\mu$ l of whole blood. The optimal concentration should be determined by the user for each specific application.		
<b>Storage &amp; Stability:</b>	Stable at 2-8°C for 12 months. For longer storage, freeze aliquots at -20 to -80°C. <b>Avoid repeated freeze-thaw cycles.</b>		



A typical staining pattern with the B-N40 monoclonal antibody on lymphocytes



NOT FOR HUMAN USE. FOR RESEARCH ONLY. NOT FOR DIAGNOSTIC OR THERAPEUTIC USE.



**Cell Sciences**<sup>®</sup>  
65 Parker Street  
Unit 11  
Newburyport, MA 01950

Toll Free: 888-769-1246  
Phone: 978-572-1070  
Fax: 978-992-0298

E-mail: [info@cellsciences.com](mailto:info@cellsciences.com)  
Website: [www.cellsciences.com](http://www.cellsciences.com)