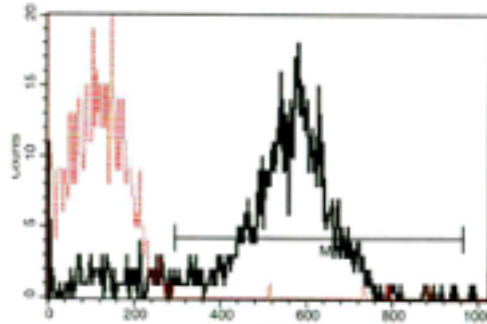


## SELP

### Mouse Anti-Human P-Selectin / CD62P (Clone B-F46) mAb, Azide Free

<b>Catalog No.</b>	CDM292A CDM292B	<b>Quantity:</b>	200 µg 500 µg
<b>Alternate Names:</b>	CD62 antigen-like family member P, Granule membrane protein 140, GMP-140, Leukocyte-endothelial cell adhesion molecule 3, LECAM3, Platelet activation dependent granule-external membrane protein, PADGEM		
<b>Description:</b>	The monoclonal antibody recognizes human P-Selectin, a glycoprotein that is stored in the alpha-granules of platelets and Weibel-Palade bodies of endothelial cells. The protein redistributes to the plasma membrane during platelet activation and degranulation and mediates the interaction of activated endothelial cells or platelets with leukocytes.		
<b>UniProt ID:</b>	P16109		
<b>Gene ID:</b>	6403		
<b>Concentration:</b>	1.0 mg/ml		
<b>Specificity:</b>	Recognizes CD62P, a 140 kD single chain type I transmembrane glycoprotein.		
<b>Hybridoma:</b>	Myeloma X63/AG.8653 x Balb/c node cells		
<b>Isotype:</b>	Mouse IgG1κ		
<b>Immunogen:</b>	Recombinant CD62P		
<b>Clone:</b>	B-F46		
<b>Formulation:</b>	Sterile-filtered PBS, carrier and preservative free.		
<b>Purification:</b>	Ion exchange chromatography		
<b>Applications:</b>	ELISA, Flow cytometry		
<b>Storage &amp; Stability:</b>	Stable at 2-8°C for 1 year. For longer storage, freeze in aliquots at -20°C to -80°C. <b>Avoid repeated freeze-thaw cycles.</b>		

A typical staining pattern with the B-F46 monoclonal antibody on platelets.



NOT FOR HUMAN USE. FOR RESEARCH ONLY. NOT FOR DIAGNOSTIC OR THERAPEUTIC USE.