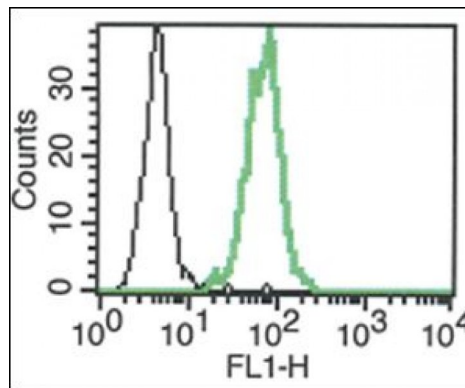


## IL18R1

### Mouse Anti-Human IL-18R1 / CD218a (Clone B-E43) mAb, Azide Free

<b>Catalog No.</b>	CDM241A CDM241B	<b>Quantity:</b>	200 µg 500 µg
<b>Alternate Names:</b>	Interleukin 18 Receptor 1, CD218a, CDw218a, IL18RA, IL1RRP		
<b>Description:</b>	The monoclonal antibody recognizes the 63 kDa protein human IL-18Ra, a cytokine receptor that belongs to the interleukin 1 receptor family. This receptor specifically binds interleukin 18 (IL18), and is essential for IL18 mediated signal transduction. IFN-alpha and IL12 are reported to induce the expression of this receptor in NK and T cells.		
<b>UniProt ID:</b>	Q13478		
<b>Gene ID:</b>	8809		
<b>Concentration:</b>	1.0 mg/ml		
<b>Specificity:</b>	Human IL18R1, a 63 kDa protein		
<b>Hybridoma:</b>	Myeloma X63/AG.8653 x Balb/c spleen cells		
<b>Isotype:</b>	Mouse IgG1 Kappa light chain		
<b>Immunogen:</b>	Recombinant human IL18R1/Fc		
<b>Clone:</b>	B-E43		
<b>Formulation:</b>	Sterile filtered PBS, carrier and preservative free.		
<b>Biological Activity:</b>	Inhibits human IFN $\gamma$ secretion induced by IL-18 stimulated cells		
<b>Cross-Reactivity:</b>	Reacts with mouse CDw218a protein in cytometry		
<b>Applications:</b>	Functional studies, ELISA, Flow cytometry		
<b>Storage &amp; Stability:</b>	Stable for 1 year at 2-8°C. For longer storage, freeze in aliquots at -20°C to -80°C. <b>Avoid repeated freeze-thaw cycles.</b>		

A typical staining pattern with B-E43 monoclonal antibody on U937 cell line



NOT FOR HUMAN USE. FOR RESEARCH ONLY. NOT FOR DIAGNOSTIC OR THERAPEUTIC USE.

