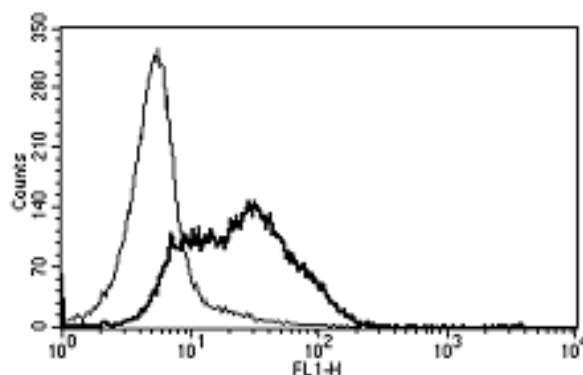


## CD82

### Mouse Anti-Human CD82 (Clone B-L2) mAb

<b>Catalog No.</b>	CDM200	<b>Quantity:</b>	200 tests
<b>Alternate Names:</b>	R2; 4F9; C33; IA4; ST6; GR15; KAI1; SAR2; TSPAN27		
<b>Description:</b>	The monoclonal antibody recognizes human CD82, a membrane glycoprotein that is a member of the transmembrane 4 superfamily. This protein is considered a metastasis suppressor, as it has been shown to be downregulated in tumor progression of human cancers.		
<b>Gene ID:</b>	3732		
<b>UniProtKB:</b>	P27701		
<b>Specificity:</b>	Recognizes the human CD82 antigen, a 60 kDa protein.		
<b>Host:</b>	Mouse		
<b>Isotype:</b>	IgG1		
<b>Immunogen:</b>	CD82 transfected P815 cell line		
<b>Clone:</b>	B-L2		
<b>Formulation:</b>	Liquid in PBS with 1% BSA and 0.1 % sodium azide		
<b>Applications:</b>	Flow cytometry, Immunohistochemistry		
<b>Application Notes:</b>	Flow cytometry: Use 10 µL to label 10 <sup>6</sup> cells or 100 µL of whole blood. Immunohistochemistry: recommended dilution 1:50. The optimal concentration should be determined by the user for each application.		
<b>Storage &amp; Stability:</b>	Stable at 2-8 °C for 1 year. For longer storage, freeze in working aliquots at -20 °C to -80 °C. <b>Avoid repeated freeze-thaw cycles.</b>		
<b>Statement:</b>	PPE is recommended when working with products containing sodium azide		

A typical staining pattern with the B-L2 monoclonal antibody on lymphocytes.



NOT FOR HUMAN USE. FOR RESEARCH ONLY. NOT FOR DIAGNOSTIC OR THERAPEUTIC USE.

