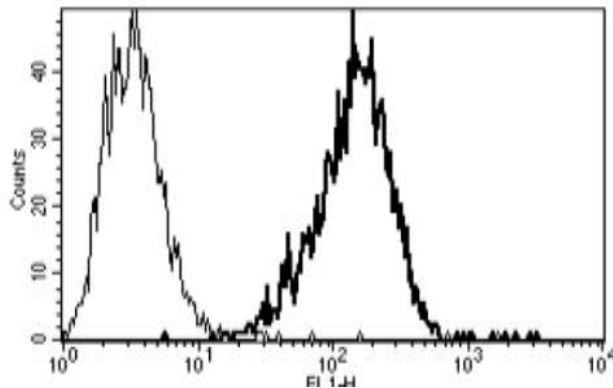


## ST6GAL1

### Mouse Anti-Human CD75 (Clone B-L5) mAb, Azide Free

<b>Catalog No.</b>	CDM196A CDM196B	<b>Quantity:</b>	200 µg 500 µg
<b>Alternate Names:</b>	Beta-galactoside alpha-2,6-sialyltransferase 1, Alpha 2,6-ST 1, Sialyltransferase 1, ST6Gal I		
<b>Description:</b>	B-cell antigen CD75 is a type II membrane protein that catalyzes the transfer of sialic acid from CMP-sialic acid to galactose-containing acceptor substrates. The protein, which is normally found in the Golgi but can be proteolytically processed to a soluble form, is involved in the generation of the cell-surface carbohydrate determinants and differentiation antigens HB-6, CD75, and CD76. CD75 is predominately expressed on germinal center originated B cells and lymphomas. It is also found on mature slg+ B cells and epithelial cells of lung, breast, kidney, and prostate.		
<b>UniProt ID:</b>	P15907		
<b>Gene ID:</b>	6480		
<b>Concentration</b>	1.0 mg/ml		
<b>Specificity:</b>	Recognizes lactosamines		
<b>Hybridoma:</b>	Myeloma X63/AG.8653 x Balb/c spleen cells		
<b>Immunogen:</b>	Raji cell line		
<b>Isotype:</b>	Mouse IgM κ		
<b>Clone:</b>	B-L5		
<b>Formulation:</b>	Sterile filtered PBS, carrier and preservative free.		
<b>Applications:</b>	Flow cytometry, ELISA		
<b>Storage &amp; Stability:</b>	Stable for 1 year at 2-8°C. For longer term, store in working aliquots at -20°C to -80°C. <b>Avoid repeated freeze-thaw cycles.</b>		

A typical staining pattern with the B-L5 monoclonal antibody of Raji cell line



NOT FOR HUMAN USE. FOR RESEARCH ONLY. NOT FOR DIAGNOSTIC OR THERAPEUTIC USE.

