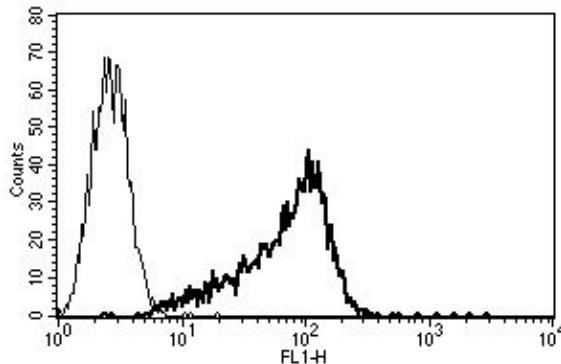


## CD34

### Mouse Anti-Human CD34 Class I (Clone B-G25) mAb, Azide Free

<b>Catalog No.</b>	CDM175A CDM175B	<b>Quantity:</b>	200 µg 500 µg
<b>Alternate Names:</b>	Hematopoietic progenitor cell antigen CD34		
<b>Description:</b>	Hematopoietic progenitor cell antigen CD34 is a possible adhesion molecule with a role in early hematopoiesis by mediating the attachment of stem cells to the bone marrow extracellular matrix or directly to stromal cells. Could act as a scaffold for the attachment of lineage specific glycans, allowing stem cells to bind to lectins expressed by stromal cells or other marrow components. Presents carbohydrate ligands to selectins.		
<b>UniProt ID:</b>	P28906		
<b>Gene ID:</b>	947		
<b>Concentration:</b>	1.0 mg/ml		
<b>Specificity:</b>	Recognizes the Gp105-120 antigen, a 105-120 kDa protein		
<b>Hybridoma:</b>	Myeloma X63/AG.8653 x BALB/c spleen cells		
<b>Immunogen:</b>	KG-1a cell line		
<b>Isotype:</b>	Mouse IgG1κ		
<b>Clone:</b>	B-G25		
<b>Formulation:</b>	Sterile-filtered PBS., carrier and preservative free		
<b>Purification:</b>	Ion exchange chromatography		
<b>Biological Activity:</b>	Triggers KG-1a cell aggregation		
<b>Applications:</b>	Flow cytometry, Functional studies		
<b>Storage &amp; Stability:</b>	Stable at 2-8°C for 1 year. For longer storage, freeze in aliquots at -20°C to -80°C. <b>Avoid repeated freeze-thaw cycles.</b>		

A typical staining pattern with the B-G25 monoclonal antibody of KG-1a cell line



NOT FOR HUMAN USE. FOR RESEARCH ONLY. NOT FOR DIAGNOSTIC OR THERAPEUTIC USE.



**Cell Sciences®**  
65 Parker Street  
Unit 11  
Newburyport, MA 01950

Toll Free: 888-769-1246  
Phone: 978-572-1070  
Fax: 978-992-0298

E-mail: [info@cellsciences.com](mailto:info@cellsciences.com)  
Website: [www.cellsciences.com](http://www.cellsciences.com)