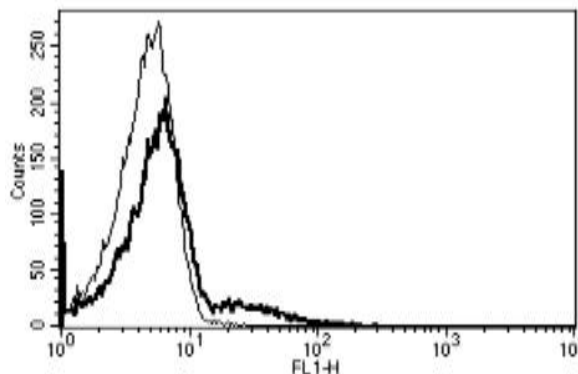


FCER2

Mouse Anti-Human CD23 (Clone B-G6) mAb, Azide Free

Catalog No.	CDM167A CDM167B	Quantity:	200 µg 500 µg
Alternate Names:	Low affinity immunoglobulin epsilon Fc receptor, BLAST-2, C-type lectin domain family 4 member J, Fc-epsilon-R1I, Immunoglobulin E-binding factor, Lymphocyte IgE receptor		
Description:	Mouse monoclonal recognizes the human low-affinity receptor for immunoglobulin E (IgE) and CR2/CD21. CD23 has essential roles in the regulation of IgE production and in the differentiation of B-cells (it is a B-cell-specific antigen).		
UniProt ID:	P06734		
Gene ID:	2208		
Concentration:	1.0 mg/ml		
Specificity:	Recognizes the low affinity IgE receptor (Fce R1I), a 45 kDa protein		
Hybridoma:	Myeloma X63/AG.8653 x BALB/c spleen cells		
Immunogen:	Daudi cell line		
Isotype:	Mouse IgG1 Kappa light chain		
Clone:	B-G6		
Formulation:	Sterile-filtered PBS. Carrier and preservative free.		
Purification:	Ion exchange chromatography		
Applications:	Flow cytometry Immunohistochemistry (recommended dilution 1:50) The optimal concentration should be determined by the user for each specific application.		
Storage & Stability:	Stable at 2-8°C for one year. For longer storage, freeze aliquots at -20°C. Avoid repeated freeze-thaw cycles.		

A typical staining pattern with the B-G6 monoclonal antibody of lymphocytes



NOT FOR HUMAN USE. FOR RESEARCH ONLY. NOT FOR DIAGNOSTIC OR THERAPEUTIC USE.

