

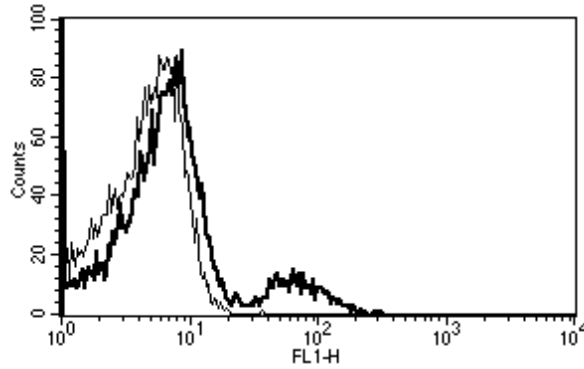
## CR2

### Mouse Anti-Human CD21 / CR2 (Clone B-E5) FITC mAb

<b>Catalog No.</b>	CDM163	<b>Quantity:</b>	100 tests
<b>Alternate Names:</b>	C3DR, CD21, CR, CVID7, SLEB9		
<b>Description:</b>	Complement Component (3d/Epstein Barr Virus) Receptor 2 (CR2) is also known as CD21. CR2/CD21 is a membrane protein, which functions as a receptor for Epstein Barr Virus (EBV) binding on B- and T-lymphocytes. Genetic variations in the CR2 gene are associated with susceptibility to Systemic Lupus Erythematosus type 9 (SLEB9).		
<b>Concentration:</b>	100 tests / 1mL		
<b>Gene ID:</b>	1380		
<b>UniProtKB:</b>	P20023		
<b>Specificity:</b>	Recognizes the Epstein-Barr virus receptor (EBV R), CR2, C3d R, a 110 kDa protein.		
<b>Hybridoma:</b>	Myeloma X63/AG.8653 x Balb/c spleen cells		
<b>Immunogen:</b>	Daudi cell line		
<b>Isotype:</b>	Mouse IgG2a		
<b>Clone:</b>	B-E5		
<b>Conjugate:</b>	FITC		
<b>Formulation:</b>	PBS with 5% BSA and 0.1% sodium azide.		
<b>K<sub>D</sub>:</b>	10 nM		
<b>Applications:</b>	Flow cytometry Competes with EBV for CD21 binding.		
<b>Application Notes:</b>	Use 10 µL to label 10 <sup>6</sup> cells or 100 µL of whole blood. The optimal concentration should be determined by the user for each specific application.		
<b>Storage &amp; Stability:</b>	Store at 2-8 °C for up to one year or in working aliquots at -20 °C to -80 °C. <b>Avoid repeated freeze-thaw cycles.</b>		
<b>Statement:</b>	PPE is recommended when working with products containing sodium azide.		



A typical staining pattern with the B-E5 monoclonal antibody of lymphocytes.



**NOT FOR HUMAN USE. FOR RESEARCH ONLY. NOT FOR DIAGNOSTIC OR THERAPEUTIC USE.**



**Cell Sciences®**  
65 Parker Street  
Unit 11  
Newburyport, MA 01950

Toll Free: 888-769-1246  
Phone: 978-572-1070  
Fax: 978-992-0298

E-mail: [info@cellsciences.com](mailto:info@cellsciences.com)  
Website: [www.cellsciences.com](http://www.cellsciences.com)