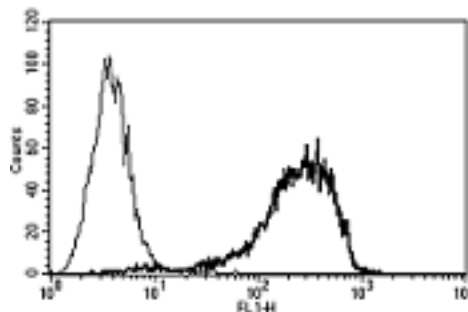


SDC1

Mouse Anti-Human Syndecan 1/CD138 (Clone B-A38) mAb

Catalog No.	CDM140	Quantity:	2.0 mL
Alternate Names:	SDC; CD138; SYND1; syndecan		
Description:	The monoclonal antibody recognizes human Syndecan 1 (SDC1), also known as CD138, a transmembrane (type I) heparan sulfate proteoglycan and a member of the syndecan proteoglycan family. The syndecans mediate cell binding, cell signaling, and cytoskeletal organization and syndecan receptors are required for internalization of the HIV-1 tat protein. SDC1/CD138 functions as an integral membrane protein and participates in cell proliferation, cell migration and cell-matrix interactions via its receptor for extracellular matrix proteins.		
Concentration:	100 tests / ml		
Gene ID:	6382		
Conjugate:	Unconjugated		
Specificity:	Recognizes human Syndecan-1, a 65-70 kDa protein.		
Host:	Mouse		
Isotype:	IgG1		
Immunization:	U266 cell line		
Clone:	B-A38		
Formulation:	Liquid in PBS, 1% BSA, 0.09% Sodium Azide		
Applications:	Flow Cytometry, IHC		
Application Notes:	Flow Cytometry: Use 10 μ L to label 10 ⁶ cells or 100 μ L of whole blood. The optimal concentration should be determined by the user for each specific application.		
Storage & Stability:	Stable for one year at 2-8 °C. For long term storage, freeze in working aliquots at -2 0°C to -80 °C. Avoid repeated freeze-thaw cycles.		

A typical staining pattern with the B-A38 monoclonal antibody of U266 cell line



NOT FOR HUMAN USE. FOR RESEARCH ONLY. NOT FOR DIAGNOSTIC OR THERAPEUTIC USE.