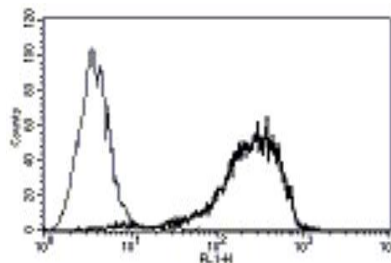


## SDC1

### Mouse Anti-Human Syndecan 1/CD138 (Clone B-A38) mAb, Azide Free

<b>Catalog No.</b>	CDM139	<b>Quantity:</b>	200 µg
<b>Alternate Names:</b>	CD138, SDC, SYND1, syndecan		
<b>Description:</b>	The mouse monoclonal antibody recognizes human syndecan 1. Syndecan 1 (SDC1/CD138) is a transmembrane heparan sulfate proteoglycan and a member of the syndecan proteoglycan family. Syndecans mediate cell binding, cell signaling, and cytoskeletal organization and syndecan receptors are required for internalization of the HIV-1 tat protein. SDC1/CD138 functions in cell proliferation, cell migration and cell-matrix interactions via its receptor for extracellular matrix proteins. Altered SDC1 expression has been detected in several different tumor types.		
<b>UniProt ID:</b>	P18827		
<b>Gene ID:</b>	6382		
<b>Concentration:</b>	1.0 mg/mL		
<b>Specificity:</b>	Recognizes syndecan-1, the heparan sulfate proteoglycan with a MW of 65-70 kDa.		
<b>Hybridoma:</b>	Myeloma X63/AG.8653 x Balb/c spleen cells		
<b>Isotype:</b>	Mouse IgG1 kappa		
<b>Immunogen:</b>	U266 cell line		
<b>Clone:</b>	B-A38		
<b>Formulation:</b>	Sterile filtered PBS, carrier and preservative free.		
<b>Applications:</b>	ELISA, Flow Cytometry, Immunohistochemistry		
<b>Storage &amp; Stability:</b>	Store at 2-8°C for up to 1 year or in working aliquots at -20°C to -80°C. <b>Avoid repeated freeze-thaw cycles.</b>		

A typical staining pattern with the B-A38 monoclonal antibody of U266 cell line.



NOT FOR HUMAN USE. FOR RESEARCH ONLY. NOT FOR DIAGNOSTIC OR THERAPEUTIC USE.

