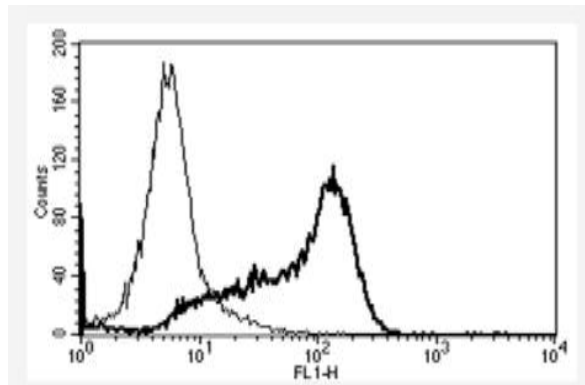


CD6

Mouse Anti-Human CD6 (Clone B-F3) Azide Free mAb

Catalog No.	CDM135	Quantity:	200 µg
Alternate Names:	T-cell differentiation antigen CD6, TP120, T12		
Description:	T-cell differentiation antigen CD6 is a glycoprotein found on the outer membrane of T-lymphocytes as well as some other immune cells. The encoded protein contains three scavenger receptor cysteine-rich (SRCR) domains and a binding site for an activated leukocyte cell adhesion molecule, ALCAM. CD6 is important for continuation of T cell activation and may be associated with susceptibility to multiple sclerosis.		
UniProt ID:	P30203		
Gene ID:	923		
Specificity:	Recognizes a 100-130 kDa protein		
Hybridoma:	Myeloma X63/AG.8653 x Balb/c spleen cells		
Immunogen:	Chronic Lymphoid Leukemia cells (CLL)		
Isotype:	Mouse IgG1κ		
Clone:	B-F3		
Concentration:	1.0 mg/ml		
Formulation:	Sterile-filtered PBS, carrier and preservative free.		
Purification:	Ion exchange chromatography		
Applications:	Flow cytometry		
Storage & Stability:	Stable at 2-8°C for 12 months. For longer storage, freeze aliquots		

A typical staining pattern with the B-F3 monoclonal antibody of lymphocytes



NOT FOR HUMAN USE. FOR RESEARCH ONLY. NOT FOR DIAGNOSTIC OR THERAPEUTIC USE.

