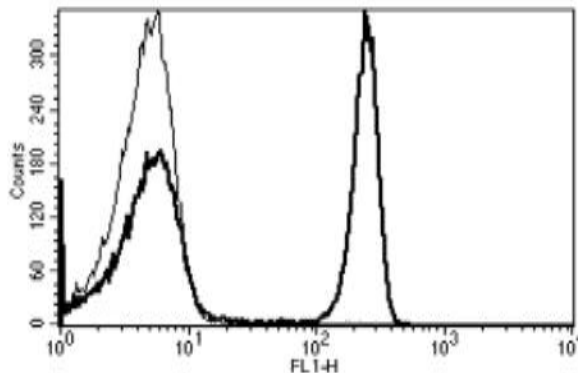


## CD4

### Mouse Anti-Human CD4 (Clone B-A1) mAb

<b>Catalog No.</b>	CDM131	<b>Quantity:</b>	200 tests
<b>Alternate Names:</b>	T-cell surface glycoprotein CD4, T-cell surface antigen T4/Leu-3		
<b>Description:</b>	The mouse monoclonal antibody recognizes human CD4, a membrane glycoprotein of T lymphocytes that interacts with major histocompatibility complex class II (MHC II) and is also a receptor for the human immunodeficiency virus. This gene is expressed not only in T lymphocytes, but also in B cells, macrophages, and granulocytes. It is also expressed in specific regions of the brain. The protein functions to initiate or augment the early phase of T-cell activation, and may function as an important mediator of indirect neuronal damage in infectious and immune-mediated diseases of the central nervous system.		
<b>UniProt ID:</b>	P01730		
<b>Gene ID:</b>	920		
<b>Concentration:</b>	100 tests/ml		
<b>Specificity:</b>	Recognizes CD4, a 55 kDa protein.		
<b>Isotype:</b>	Mouse IgG2a kappa		
<b>Immunogen:</b>	Human thymocytes and jurkat cell lines		
<b>Clone:</b>	B-A1		
<b>Formulation:</b>	PBS containing 1% BSA and 0.1% sodium azide.		
<b>Biological Activity:</b>	Kd : 0.142 nM		
<b>Applications:</b>	Flow Cytometry, Immunohistochemistry		
<b>Application Notes:</b>	Use 10 µl to label 10 <sup>6</sup> cells or 100 µl of whole blood.		
<b>Storage &amp; Stability:</b>	Store at 2-8°C for up to 1 year. For longer storage, freeze aliquots at -20 to -80°C. <b>Avoid repeated freeze-thaw cycles.</b>		

A typical staining pattern with the Anti-Human CD4 Clone B-A1 monoclonal antibody of lymphocytes



**NOT FOR HUMAN USE. FOR RESEARCH ONLY. NOT FOR DIAGNOSTIC OR THERAPEUTIC USE.**



**Cell Sciences®**  
65 Parker Street  
Unit 11  
Newburyport, MA 01950

Toll Free: 888-769-1246  
Phone: 978-572-1070  
Fax: 978-992-0298

E-mail: [info@cellsciences.com](mailto:info@cellsciences.com)  
Website: [www.cellsciences.com](http://www.cellsciences.com)