

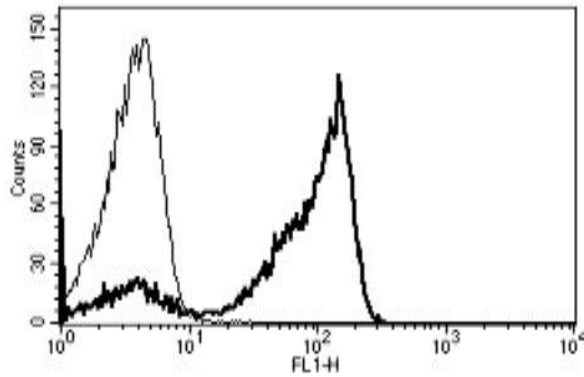
CD2

Mouse Anti-Human CD2 / LFA-2 (Clone B-E2) mAb, Azide Free

Catalog No.	CDM024A CDM024B	Quantity:	200 µg 500 µg
Alternate Names:	T-cell surface antigen CD2, Erythrocyte receptor, LFA-2, LFA-3 receptor, Rosette receptor, T-cell surface antigen T11/Leu-5, SRBC		
Description:	The monoclonal antibody recognizes human CD2, a surface antigen of the human T-lymphocyte lineage that is expressed on all peripheral blood T cells. It is one of the earliest T-cell markers, being present on more than 95% of thymocytes; it is also found on some natural killer cells but not on B lymphocytes. Monoclonal antibodies directed against CD2 inhibit the formation of rosettes with sheep erythrocytes, indicating that CD2 is the erythrocyte receptor or is closely associated with it.		
UniProt ID:	P06729		
Gene ID:	914		
Concentration:	1.0 mg/ml		
Specificity:	Recognizes the human LFA-2, a 50 kDa protein.		
Hybridoma:	Myeloma X63/AG.8653 x Balb/c spleen cells		
Isotype:	Mouse IgG2b Kappa light chain		
Immunogen:	Human thymocytes		
Clone:	B-E2		
Formulation:	Sterile filtered PBS, treated to remove endotoxins. Carrier and preservative free.		
Biological Activity:	Inhibit mixed lymphocyte culture		
Applications:	Functional studies, Flow cytometry, IHC		
Application Notes:	Immunohistochemistry: recommended dilution 1:50. The optimal concentration should be determined by the user.		
Storage & Stability:	Store at 2-8°C for up to 1 year or in working aliquots at -20°C to -80°C. Avoid repeated freeze-thaw cycles.		



A typical staining pattern with the B-E2 monoclonal antibody of lymphocytes



NOT FOR HUMAN USE. FOR RESEARCH ONLY. NOT FOR DIAGNOSTIC OR THERAPEUTIC USE.



Cell Sciences®
65 Parker Street
Unit 11
Newburyport, MA 01950

Toll Free: 888-769-1246
Phone: 978-572-1070
Fax: 978-992-0298

E-mail: info@cellsciences.com
Website: www.cellsciences.com