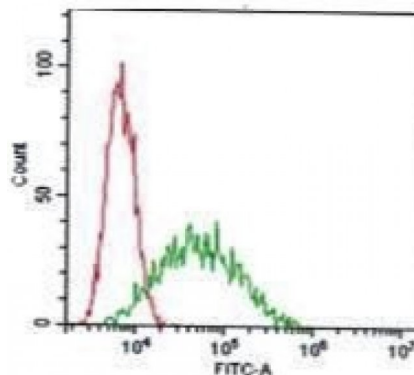


IL13RA2

Mouse Anti-Human IL-13R alpha 2 / CD213a2 (Clone B-D13) mAb, Azide Free

Catalog No.	CDM020A CDM020B	Quantity:	200 µg 500 µg
Alternate Names:	Interleukin-13 receptor subunit alpha 2, IL-13RA2, IL-13 binding protein		
Description:	The monoclonal antibody recognizes human IL-13 receptor subunit alpha 2 (IL-13Rα2) which is closely related to IL-13Rα1, a subunit of the IL-13 receptor complex. IL-13Rα2 binds IL-13 with high affinity, but lacks a cytoplasmic domain, and does not appear to function as a signal mediator. It is reported to play a role in the internalization of IL-13.		
UniProt ID:	Q14627		
Concentration:	1.0 mg/ml		
Specificity:	Recognizes human IL-13 Rα2, a 44 kDa protein.		
Hybridoma:	Myeloma X63/AG.8653 x Balb/c spleen cells		
Isotype:	Mouse IgG1 Kappa light chain		
Immunogen:	IL-13Rα2 transfected CHO cell line		
Clone:	B-D13		
Formulation:	Sterile-filtered PBS, carrier and preservative free.		
Applications:	ELISA, Flow Cytometry, IHC-P, IHC-F, IHC-M		
Storage & Stability:	Store at 2-8°C for up to 1 year or in working aliquots at -20°C to -80°C. Avoid repeated freeze-thaw cycles.		

A typical staining pattern with the B-D13 monoclonal antibody on A375 cell line



NOT FOR HUMAN USE. FOR RESEARCH ONLY. NOT FOR DIAGNOSTIC OR THERAPEUTIC USE.

